

Cabinet "U" handles

Aluminium

SPECIFICATION

Types

- Type **A**: Mounting from the back (threaded blind bore)
- Type **B**: Mounting from the operator's side

Aluminium **AL**

- plastic coated, black RAL 9005, textured finish **SW**
- plastic coated, silver RAL 9006, textured finish **SR**
- anodized, natural colour **EL**

Type B

- Lens screws ISO 7380
- Hexagon nuts ISO 4032
- Washers DIN 125

Stainless Steel AISI 304



INFORMATION

Cabinet "U" handles GN 428 are produced from profiled aluminum extrusions.

The manufacturing process (bending) allows the production of **special lengths** in relatively small quantities.

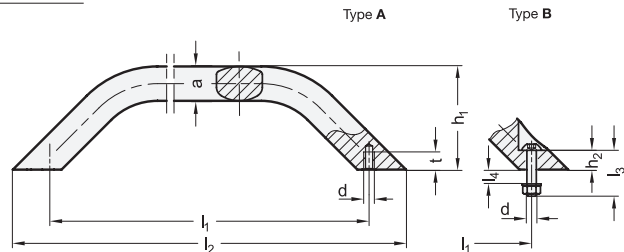
In type B lens screws, hexagon nuts and washers are included parts of the order.

ON REQUEST

- other finishes

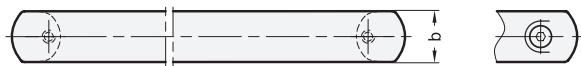
TECHNICAL INFORMATION

- Stainless Steel characteristics (see page A26)



* Complete with colour index of the Cabinet "U" handles (SW, SR or EL)

SW
SR
EL
 RAL9005 RAL9006 anodized



GN 428

| Description | b | l1 | a | d | h1 | h2 | l2 | l3 | l4 | t | ⚖ |
|----------------------|----|-----|----|------|----|------|-----|----|----|----|------|
| GN 428-AL-28-250-A-* | 28 | 250 | 18 | M 8 | 63 | - | 290 | - | - | 10 | 340 |
| GN 428-AL-28-300-A-* | 28 | 300 | 18 | M 8 | 63 | - | 340 | - | - | 10 | 391 |
| GN 428-AL-28-400-A-* | 28 | 400 | 18 | M 8 | 63 | - | 440 | - | - | 10 | 505 |
| GN 428-AL-36-300-A-* | 36 | 300 | 26 | M 10 | 71 | - | 355 | - | - | 14 | 740 |
| GN 428-AL-36-400-A-* | 36 | 400 | 26 | M 10 | 71 | - | 455 | - | - | 14 | 948 |
| GN 428-AL-36-500-A-* | 36 | 500 | 26 | M 10 | 71 | - | 555 | - | - | 14 | 1160 |
| GN 428-AL-36-600-A-* | 36 | 600 | 26 | M 10 | 71 | - | 655 | - | - | 14 | 1300 |
| GN 428-AL-36-800-A-* | 36 | 800 | 26 | M 10 | 71 | - | 855 | - | - | 14 | 1882 |
| GN 428-AL-28-250-B-* | 28 | 250 | 18 | M 8 | 63 | 11.8 | 290 | 30 | 10 | - | 369 |
| GN 428-AL-28-300-B-* | 28 | 300 | 18 | M 8 | 63 | 11.8 | 340 | 30 | 10 | - | 425 |
| GN 428-AL-28-400-B-* | 28 | 400 | 18 | M 8 | 63 | 11.8 | 440 | 30 | 10 | - | 535 |
| GN 428-AL-36-300-B-* | 36 | 300 | 26 | M 10 | 71 | 16.6 | 355 | 40 | 13 | - | 774 |
| GN 428-AL-36-400-B-* | 36 | 400 | 26 | M 10 | 71 | 16.6 | 455 | 40 | 13 | - | 1000 |
| GN 428-AL-36-500-B-* | 36 | 500 | 26 | M 10 | 71 | 16.6 | 555 | 40 | 13 | - | 1250 |
| GN 428-AL-36-600-B-* | 36 | 600 | 26 | M 10 | 71 | 16.6 | 655 | 40 | 13 | - | 1500 |
| GN 428-AL-36-800-B-* | 36 | 800 | 26 | M 10 | 71 | 16.6 | 855 | 40 | 13 | - | 1820 |

