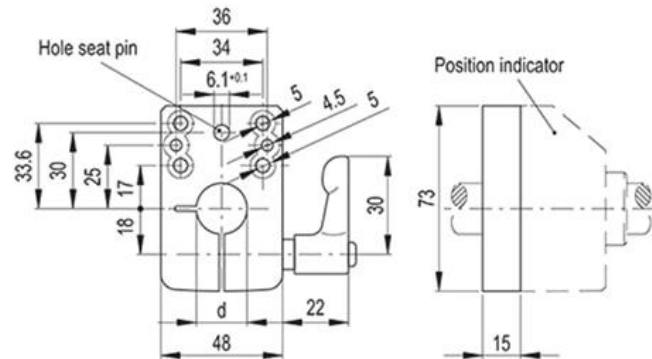


BSA52-E

Spindle locking bases for DD52R-E

Zinc alloy



Code	Description	dH7
CE.99091	BSA52-E-12	12
CE.99093	BSA52-E-14	14
CE.99094	BSA52-E-15	15
CE.99095	BSA52-E-16	16
CE.99099	BSA52-E-20	20

Main specifications

Material

Die-cast zinc alloy bases for spindle locking, epoxy resin coating, black colour, matte finish.
GN 302 adjustable handle with die-cast zinc alloy lever body and AISI 304 stainless steel clamping element.

General information

Features and applications

BSA52-E locking bases allow an easy and quick locking of the spindles after their positioning. Ø 6.1 mm hole to fit the referring pin of the indicator. Handle positioned either on the right or on the left. Fitting to the machine by means of two cylindrical-head screws (not included in the supply).