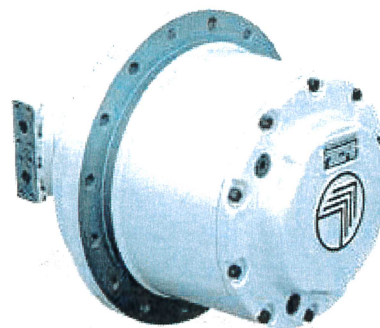
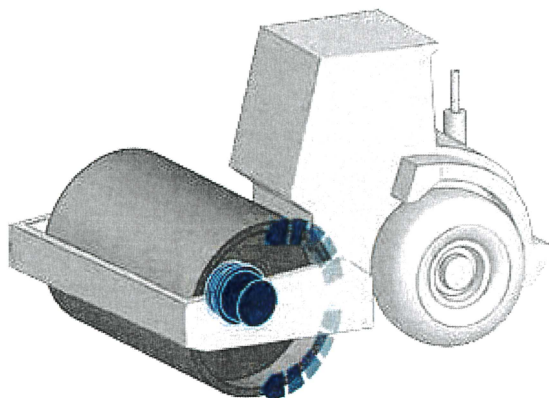


Travel and Track drives solutions for soil compactor machines.



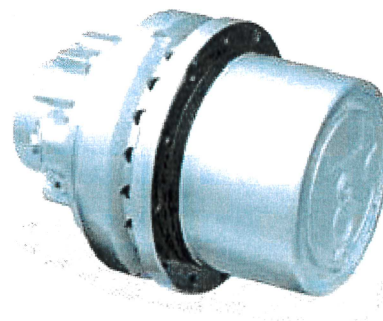
700C

Front drum drives from 2.5 to 25 tons.

Any soil compactor machine, no matter how big or small, will find the suitable travel drive within the range of the 700C series.

- All units available with a failsafe parking brake and for most cartridge type fixed or variable displacement hydraulic motors.

Type	Torque (Nm)
703 C	4000
705 C	10000
706 C	18000
707 C	26000
709 C	30000
710 C	36000
713 C	60000
715 C	85000



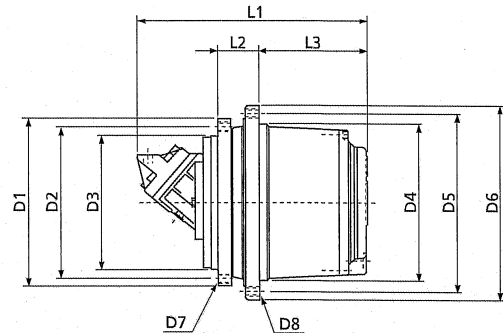
700CT

Track drive gearmotors

Extreme compactness, lightweight, efficiency and smooth operation are the key features of the 700CT series track drives, powered by integrated axial piston hydraulic motors and developed with Danfoss hydraulic.

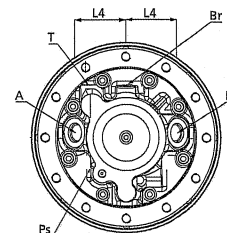
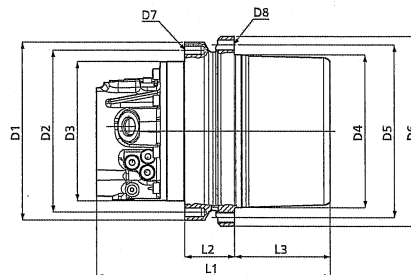
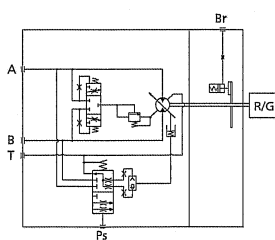
Type	Torque (Nm)
702 C2 T	3500
704 C2 T	5000
705 C2 T	9000
706 C2 T	12500

TYPE	WEIGHT	OUTPUT TORQUE	RATIOS	MOTOR TYPE
	tons	Nm	1:	
703 C	2.5 ÷ 5	4000	19 ÷ 40	high speed
705 C	5 ÷ 7	8000	41 ÷ 53	high speed
706 C	7 ÷ 9	14000	35 ÷ 44	high speed
707 C	9 ÷ 12	26000	55 ÷ 120	high speed
709 C	12 ÷ 16	30000	55 ÷ 147	high speed
710 C	16 ÷ 18	36000	55 ÷ 166	high speed
713 C	18 ÷ 20	50000	56 ÷ 147	high speed
715 C	20 ÷ 25	80000	62 ÷ 156	high speed



TYPE	D1	D2	D3	D4	D5	D6	D7	D8	L1	L2	L3
703 C	270	230	190	200	240	280	M16x2 n°8	M20x1.5 n°8	Depend on motor type	72	128
705 C	270	230	190	220	260	300	M16x2 n°12	M16x2 n°16		72	158
706 C	330	300	270	280	330	370	M16x2 n°18	M16x2 n°18		115	190
707 C	317	285	240	300	340	370	M20x2.5 n°20	M16x2 n°20		82	233
709 C	375	340	300	330	370	400	M20x2.5 n°16	M16x2 n°30		91	243
710 C	375	340	300	350	400	435	M20x2.5 n°16	M20x2.5 n°16		91	243
711 C	425	325	290	410	455	490	M20x2.5 n°24	M20x2.5 n°24		110	265
713 C	425	325	290	410	455	490	M20x2.5 n°24	M20x2.5 n°24		110	280
715 C	500	460	420	460	510	550	M20x2.5 n°24	M20x2.5 n°24	130	315	

TYPE	WEIGHT	OUTPUT TORQUE	RATIOS	MOTOR TYPE
	tons	Nm	1:	
702 C2 T	2.5 - 3.5	3500	15 ÷ 22	high speed
704 C2 T	3.5 - 5	5000	18	high speed
705 C2 T	5 - 7	9000	25 ÷ 30	high speed
706 C2 T	7 - 9	12500	53	high speed



TYPE	D1	D2	D3	D4	D5	D6	D7	D8	L1	L2	L3	L4	A-B	T	PS
702 C2 T	270	240	210	210	245	275	M16x2 n°8	M16x2 n°12	340	153	70	77	1" 1/16-12 UNF	3/4"-16 UNF	9/16"-18 UNF
704 C2 T	268	244	210	230	260	286	M14x2 n°12	M16x2 n°8	355	75	146	77			
705 C2 T	268	244	210	230	260	286	M14x2 n°12	M14x2 n°12	355	75	144	77			
706 C2 T	308	280	246	275	305	331	M14x2 n°16	M14x2 n°16	390	100	156	77			